



We work together to create engineering solutions, which help our customers deliver processes vital to society.

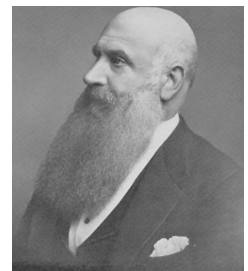
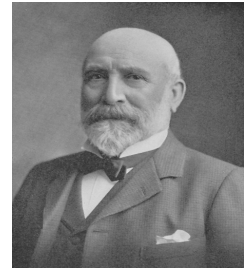
The Weir Group Overview

G & J Weir was founded in 1871 by two brothers, George and James Weir (shown to the right).

Today, Weir is a \$2.3B company employing over 8,000 people worldwide across three divisions, in closely aligned, independently successful companies, each with leading brand name products in their own sectors.

These businesses are supported at Group level by management, marketing, training, and research and development resources, through our Scottish headquarters and through regional, product-focused centers of excellence around the world.

Across the Group, we are committed to collaborating, cooperating and integrating our offering. Crucially, we are working as one in the journey towards operational excellence.



A World Leader in Specialty Pumps

Weir Specialty Pumps Company Profile

Weir Specialty Pumps engineers, manufactures and sells pumps and related equipment for the Municipal Wastewater, Oil/Gas/Petrochemical/Refinery, General Industrial, Food and Beverage, Pulp and Paper, and Industrial Wastewater global markets.

Located in Salt Lake City, Utah, U.S.A. with 5.5 acres of site space that includes 150,000 sq. feet of manufacturing and test facilities, and 30,000 sq. feet of office space, Weir Specialty Pumps is well equipped to handle the largest of jobs. Test capabilities include up to 750 HP (560 kw) and flows up to 50,000 GPM (11,360 m³/hr). Weir Specialty Pumps is also ISO 9001, ISO 14001 Certified, and OHSAS 18001 Certified. We also put great emphasis on lean manufacturing.

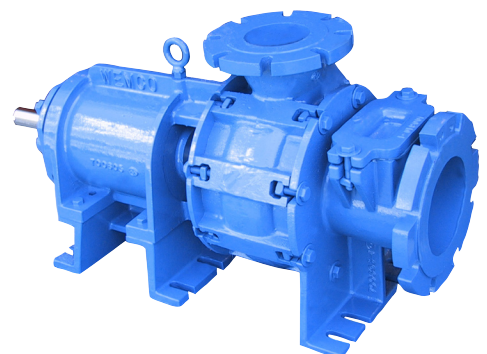
Weir Specialty Pumps products include the combined WEMCO product line, consisting of the WEMCO Torque-Flow recessed impeller pump, WEMCO-Hidrostal, WEMCO Self-Primer, WEMCO Chop-Flow, and the WEMCO Hydrogritter. Weir Specialty Pumps also sells the pitot-tube style Roto-Jet high pressure pump.



Roto-Jet VSR



WEMCO Self-Primer



WEMCO Chop-Flow